

General Notes

- All instruments to be hung with safety cables properly attached.
- Have R119 + R132 available at focus for all ellipsoidal fixtures
- Instruments with BLACK end caps on plot need 750W Lamp.

Key to Instrumentation

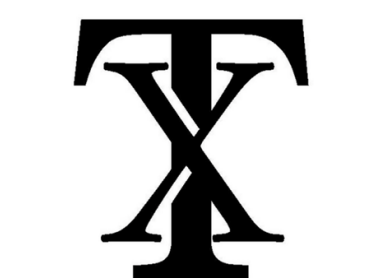
Symbol	Description	Counts
	Source 4 194deg 750w	10
	Source 4 264deg 750w	46
	Source 4 364deg 750w	20
	ColourSource Spot 194deg 750w	2
	360Q 609 750w	4
	Strand L-Module 36deg 1000w	4
	PAR64 MFL 1000w	8
	PAR64 NSP 1000w	8
	PAR64 VNSP 1000w	4
	Starpar WFL 375w	14
	Source 4 Paranel 575w	34
	6 inch Fresnel 750w	4
	8 inch Fresnel 2000w	3
	GC-3 Cut Eye 1000w	8
	Altman R40 Strip 1200w	4
	Altman Connet 400w	2
	Chasler Galaxia 2 Quad Zoom Tour 205w	6
	ETC Revolution 400w	2
	Elation Platinum 35 Spot Pro 1200w	2
	VariLite VL880 1200w	2

Accessories

Symbol	Description
	6.25 inch Top Hat
	10 inch Barn Door
	12 inch Side Arm
	Rosco L-Cue

Typical

	AF-Color
	Template
	Unit #
	Channel



ST. XAVIER High School
MEN FOR OTHERS

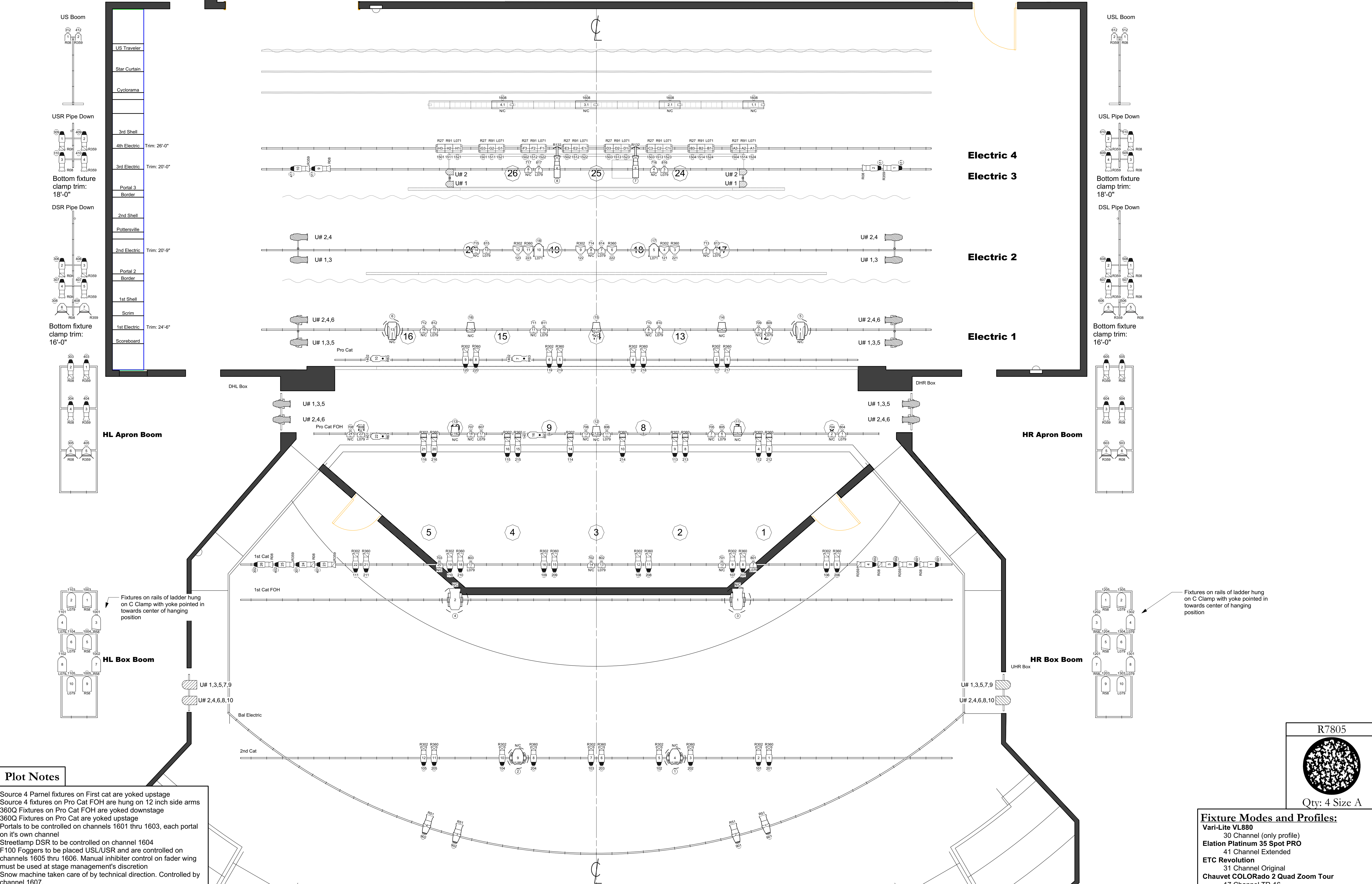
It's A Wonderful Life

Lighting Designer: Miss Malone
Director: Nathan Gabriel
ALD: Chris Lapstreu
ME: Chris Lapstreu
AME: Riley Chang
AME: Logan Ford
RLD: Miss Malone
DATE: 10/26/2018
SCALE: 1/4" = 1'-0"
DRAFTED BY: CDL
REVISION: Archival Plot

Ground Plan

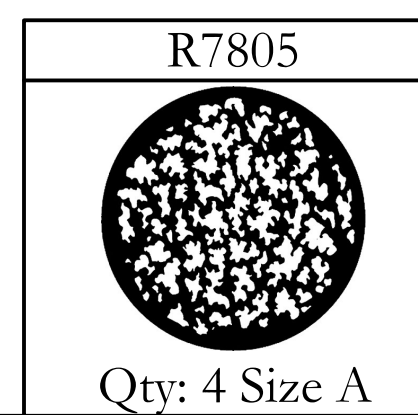
Plate
1 of 1

FILE REF: LAWL_Archival_Plot



Plot Notes

Source 4 Paranel fixtures on First cat are yoked upstage
 Source 4 fixtures on Pro Cat FOH are hung on 12 inch side arms
 360Q Fixtures on Pro Cat FOH are yoked downstage
 360Q Fixtures on Pro Cat are yoked upstage
 Portals to be controlled on channels 1601 thru 1603, each portal on it's own channel
 Streetlamp DSR to be controlled on channel 1604
 F100 Foggers to be placed USL/USR and are controlled on channels 1605 thru 1606. Manual inhibitor control on fader wing must be used at stage management's discretion
 Snow machine taken care of by technical direction. Controlled by channel 1607.
 Only one circuit of R40 strips in use, in no color. Should use a frosted 300W bulb. All other circuits are to have bulbs and roundels removed for aesthetics
 House to be controlled on channel 2000, dimmer 203 and 204 control aisle lights and should be parked at full during all productions.



Fixture Modes and Profiles:
Vari-Lite VL880
 30 Channel (only profile)
Elation Platinum 35 Spot PRO
 41 Channel Extended
ETC Revolution
 31 Channel Original
Chauvet COLORado 2 Quad Zoom Tour
 17 Channel TR-16

This drawing represents visual concepts and construction suggestions. It does not replace the knowledge and advice of a licensed structural engineer. The designer is unqualified to determine the structural appropriateness of this design and shall not assume responsibility for improper engineering or use.

1 [Drawing Title]
Scale: 1/4" = 1'-0"